

THE ACRE



NEWSLETTER

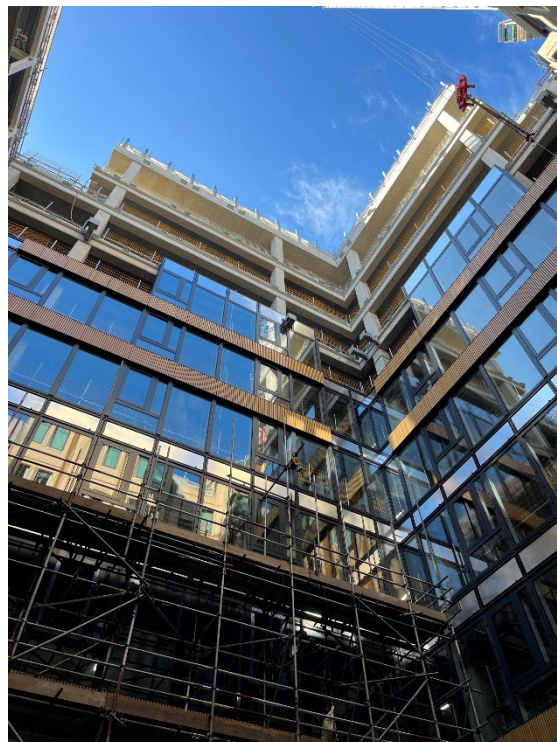
AUGUST 2023

Dear Neighbours,

Welcome to the monthly update on The Acre development from Lendlease. This regular newsletter will keep you up to date with the progress we have made, what we will be working on in the coming months, community events you can get involved with and how to get in touch.

Construction Update

Roof plant deliveries are now well progressed with the roof plantroom install underway. The installation of the new unitised facade on Unit 10 overlooking Long Acre has commenced with units from Level 2 upwards flying in. Facade installation also continues in the Atrium located in the heart of the building as well as in Unit 20 which is now nearing completion save for the terracotta cladding on the Long Acre / Endell St corner, which will be attached separately. On ground floor Radiani have continued to install fire rated glazing in unit 10 and McGee have now completed the metal deck installation in the loading bay on Shelton Street. WC toilet core install is ongoing throughout the building with the CAT A areas progressing well up the building. Electrical busbar has now commenced in the risers with ductwork install well progressed across the vent risers. Works are progressing in the basement with the installation of the cycle stair, as well as high level services and plant installation on basement level 1. Shower rooms have also commenced in the basement. GL 01 has now been tested with works complete ready for the lift to go into beneficial use when required.



THE ACRE



NEWSLETTER

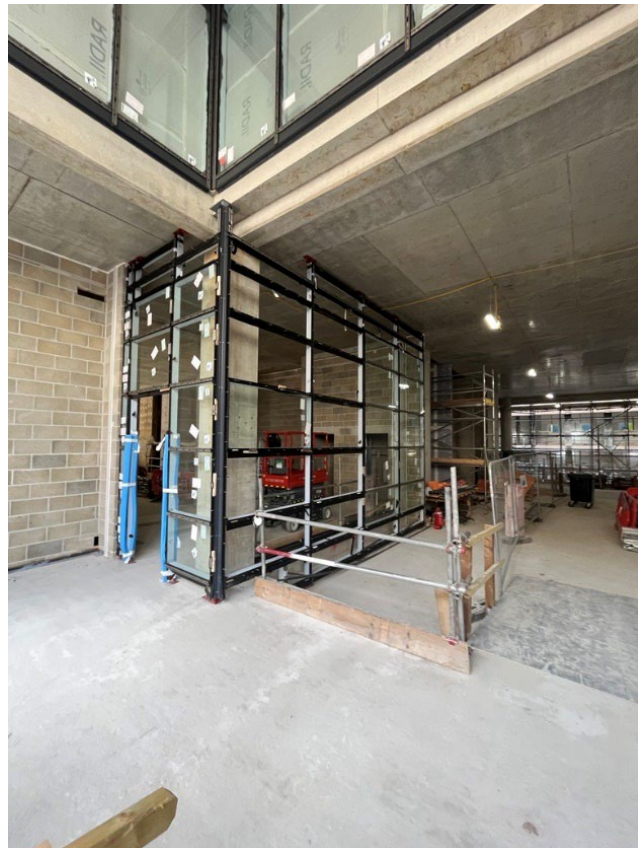
AUGUST 2023

Community Engagement Update

The next drop-in surgeries will take place on: **Tuesday 29th August 10-11am and 5.30-6pm**. These are open to all neighbours and act as an opportunity to discuss any individual queries relating to the works with senior members of the project team.

If you would like to attend one of the virtual drop-in surgeries, please get in touch at:

90LongAcre@kandaconsulting.co.uk or **Charlene.Sargeant@lendlease.com** to book a slot with the project team within the times provided above and we will provide you with a secure link to meet members of the team.



Working Hours

General working hours during this time will be:

Monday – Friday:

8am – 6pm

Saturday:

8am – 1pm

Contact Us

If you have any concerns or questions, the staff listed below will be available to help, including the 24-hour on-site security team in case of any urgent issues:

Dave Shutt	Construction Director	07834 250 287	David.Shutt@lendlease.com
James Bebb	Senior Project Manager	07704 146 956	James.Bebb@lendlease.com
Charlene Sargeant	Social Value Manager	07918 740 880	Charlene.Sargeant@lendlease.com

Please contact the project consulting team to find out more about the activities taking place on site and for key construction updates at:

90LongAcre@kandaconsulting.co.uk