

# THE ACRE



## NEWSLETTER

MAY 2023

### **Dear Neighbours,**

Welcome to the monthly update on The Acre development from Lendlease. This regular newsletter will keep you up to date with the progress we have made, what we will be working on in the coming months, community events you can get involved with and how to get in touch.

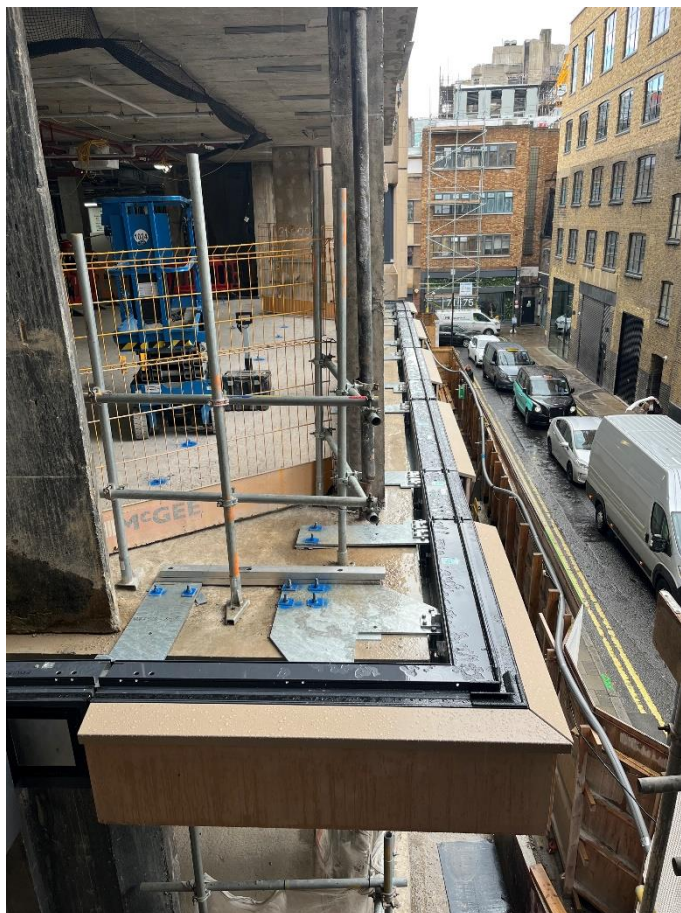
### **Construction Update**

The steel framed structure is now complete up to Level 10 with the topping slab poured, the steel frame on Gate 5 Shelton St will commence this month with final infill works and concrete repairs coming to an end across the project.

We have continued to install replacement windows across the retained facades on all elevations. Bracket installation for the new unitised façade on both the Arne St and Long Acre elevations continues with the first of the facade units to be installed in the coming weeks.

High level mechanical and electrical service installation continues from L1-6, MEP install is also ongoing in the risers. Perimeter drylining continues from L1-6 with the ceiling rafts underway also.

Mechanical and electrical installation of high-level services continue in basement 2, M&E plant deliveries are ongoing into the basement with some being moved into their final position.



# THE ACRE



## NEWSLETTER

MAY 2023

### Community Engagement Update

The next drop-in surgeries will take place on: **Thursday 25<sup>th</sup> May 10-11am and 5.30-6pm**. These are open to all neighbours and act as an opportunity to discuss any individual queries relating to the works with senior members of the project team.

If you would like to attend one of the virtual drop-in surgeries, please get in touch at: **90LongAcre@kandaconsulting.co.uk** or **Charlene.Sargeant@lendlease.com** to book a slot with the project team within the times provided above and we will provide you with a secure link to meet members of the team.

### Working Hours

General working hours during this time will be:

**Monday – Friday:**

**8am – 6pm**

**Saturday:**

**8am – 1pm**



### Contact Us

If you have any concerns or questions, the staff listed below will be available to help, including the 24-hour on-site security team in case of any urgent issues:

Dave Shutt	Construction Director	07834 250 287	David.Shutt@lendlease.com
James Bebb	Senior Project Manager	07704 146 956	James.Bebb@lendlease.com
Charlene Sargeant	Social Value Manager	07918 740 880	Charlene.Sargeant@lendlease.com

Please contact the project consulting team to find out more about the activities taking place on site and for key construction updates at:

**90LongAcre@kandaconsulting.co.uk**