

THE ACRE



NEWSLETTER

APRIL 2023

Dear Neighbours,

Welcome to the monthly update on The Acre development from Lendlease. This regular newsletter will keep you up to date with the progress we have made, what we will be working on in the coming months, community events you can get involved with and how to get in touch.

Construction Update

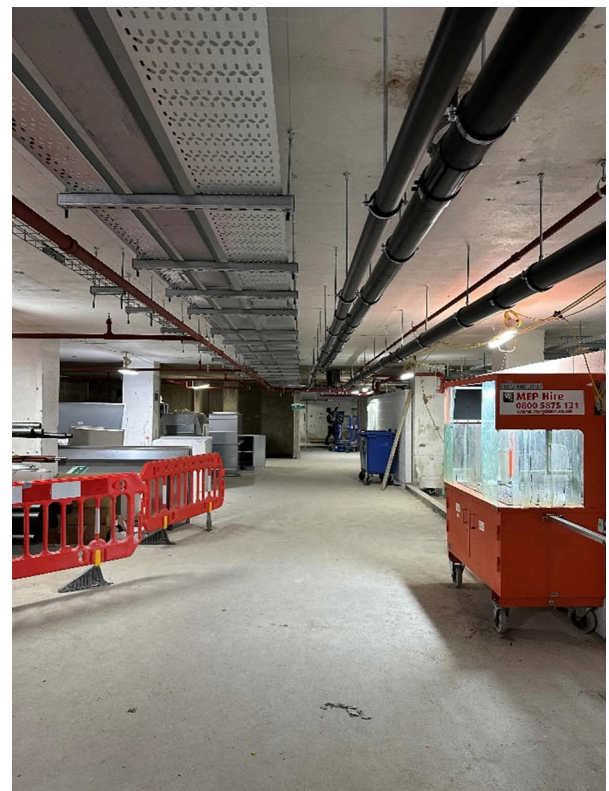
We have now completed the reinforced concrete frame up to its highest point at Level 9. The steel framed structure is now complete with the concrete topping slab planned for w/c 17.04.23.

Works to replacement windows to the retained facades across all elevations continues. The bracketry has commenced for the new unitised façade on Arne St with the Long Acre elevation to follow.

Following the gradual completion of the façade cleaning, the perimeter scaffold striking has commenced on Endell St and Shelton St.

High level mechanical and electrical services installation continues from L1-4, MEP install has also commenced in the risers with drylining to the perimeter walls ongoing in these areas also.

Mechanical and electrical installation of high-level services continue in basement 2, the first mechanical and electrical plant deliveries are now on site with more to follow throughout this month.



THE ACRE



NEWSLETTER

APRIL 2023

Community Engagement Update

Lendlease and Macai have recently completed some work at St. Joseph's Primary School. Their partially underground playground suffers from damp, Macai stripped back the paint that was there, treated the walls and have repainted it.

Lendlease also donated Easter eggs for the Easter Egg Hunt at Phoenix Gardens.

The next drop-in surgeries will take place on: Tuesday 25th April 10-11am and 5.30-6pm. These are open to all neighbours and act as an opportunity to discuss any individual queries relating to the works with senior members of the project team.

If you would like to attend one of the virtual drop-in surgeries, please get in touch at: 90LongAcre@kandaconsulting.co.uk or Charlene.Sargeant@lendlease.com to book a slot with the project team within the times provided above and we will provide you with a secure link to meet members of the team.

Working Hours

General working hours during this time will be:

Monday – Friday: 8am – 6pm
Saturday: 8am – 1pm

Contact Us

If you have any concerns or questions, the staff listed below will be available to help, including the 24-hour on-site security team in case of any urgent issues:

Dave Shutt	Construction Director	07834 250 287	David.Shutt@lendlease.com
James Bebb	Senior Project Manager	07704 146 956	James.Bebb@lendlease.com
Charlene Sargeant	Social Value Manager	07918 740 880	Charlene.Sargeant@lendlease.com

Please contact the project consulting team to find out more about the activities taking place on site and for key construction updates at:

90LongAcre@kandaconsulting.co.uk