

THE ACRE



NEWSLETTER

MARCH 2023

Dear Neighbours,

Welcome to the monthly update on The Acre development from Lendlease. This regular newsletter will keep you up to date with the progress we have made, what we will be working on in the coming months, community events you can get involved with and how to get in touch.

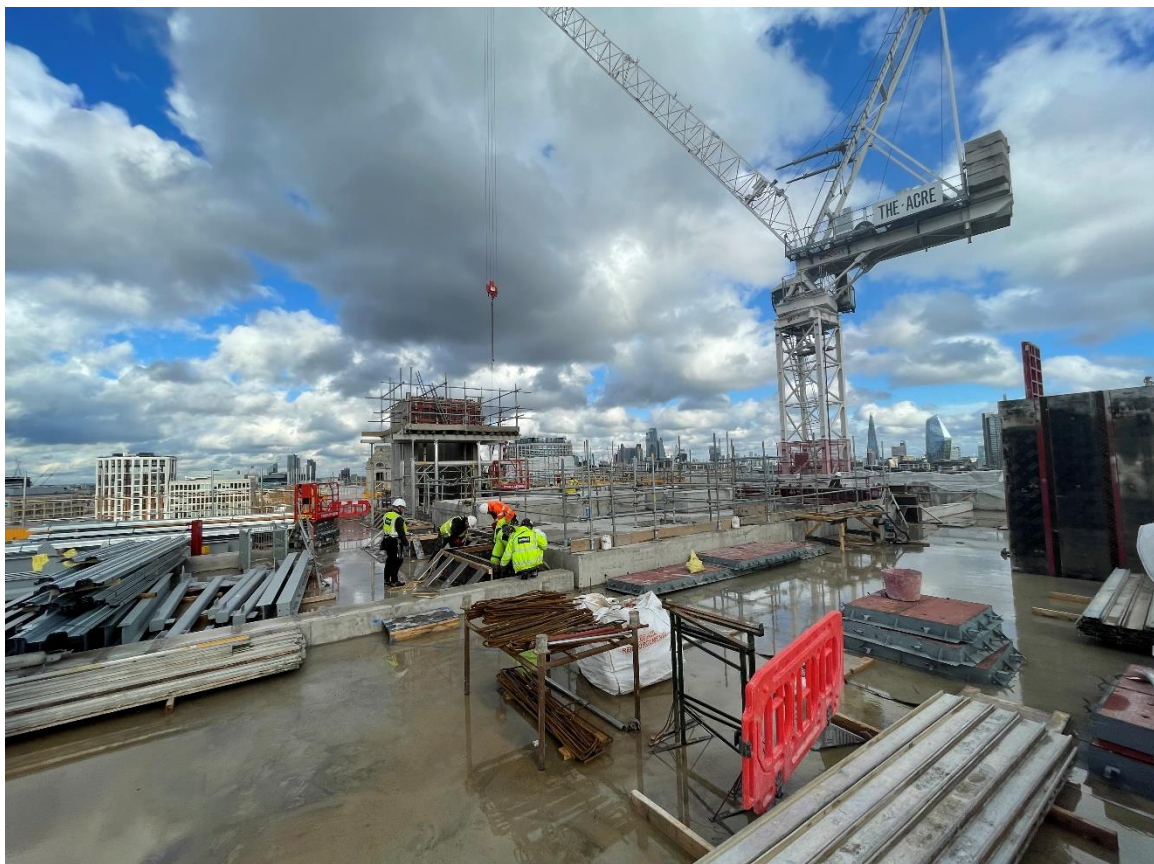
Construction Update

We have now completed the reinforced concrete frame up to its highest point at level 9. The steel framed structure forming level 10 has commenced with completion expected by the end of March.

Replacement windows to retained facades continue along Shelton St and Endell St elevations with window replacement also commenced to Long Acre elevations. The new main façade elements will commence in the first week of April, starting on the Arne St elevation.

Mechanical and electrical installations continue to the newly formed structure across levels 1-3 along with drylining installation.

Mechanical and electrical installations continue in basement 2 and main plant deliveries are due in early April.



THE ACRE



NEWSLETTER

MARCH 2023

Community Engagement Update

The Acre recently participated in Open Doors 2023, which saw members of the public attend site visits to learn more about the project.

The next drop-in surgeries will take place on: **Tuesday 28th March 10-11am and 5.30-6pm**. These are open to all neighbours and act as an opportunity to discuss any individual queries relating to the works with senior members of the project team.

If you would like to attend one of the virtual drop-in surgeries, please get in touch at: **90LongAcre@kandaconsulting.co.uk** or **Charlene.Sargeant@lendlease.com** to book a slot with the project team within the times provided above and we will provide you with a secure link to meet members of the team.

Working Hours

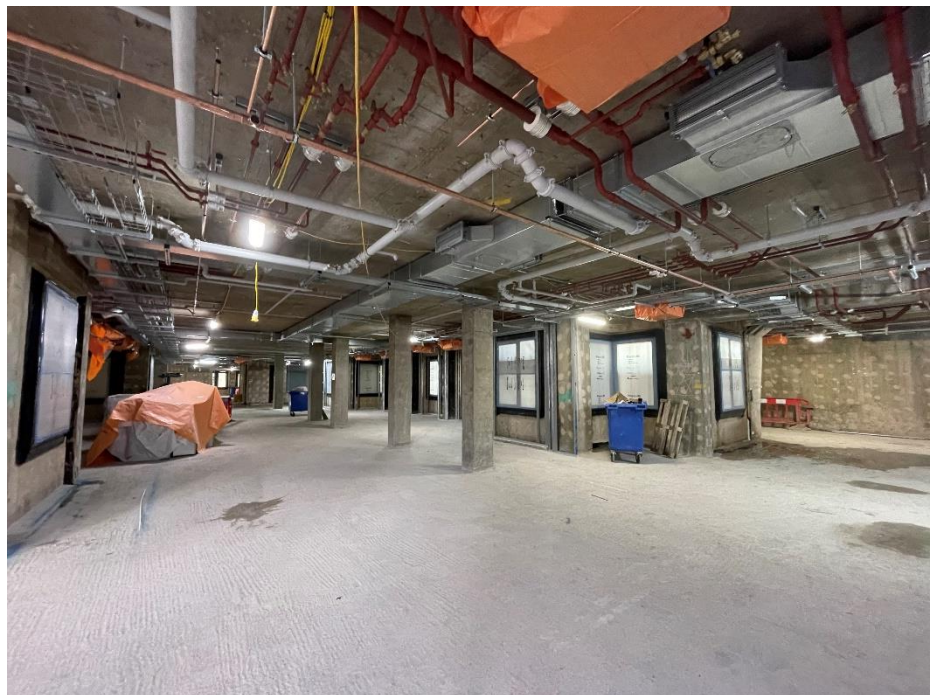
General working hours during this time will be:

Monday – Friday:

8am – 6pm

Saturday:

8am – 1pm



Contact Us

If you have any concerns or questions, the staff listed below will be available to help, including the 24-hour on-site security team in case of any urgent issues:

Dave Shutt	Construction Director	07834 250 287	David.Shutt@lendlease.com
James Bebb	Senior Project Manager	07704 146 956	James.Bebb@lendlease.com
Charlene Sargeant	Social Value Manager	07918 740 880	Charlene.Sargeant@lendlease.com

Please contact the project consulting team to find out more about the activities taking place on site and for key construction updates at:

90LongAcre@kandaconsulting.co.uk