

# THE ACRE



## NEWSLETTER

FEBRUARY 2023

### Dear Neighbours,

Welcome to the monthly update on The Acre development from Lendlease. This regular newsletter will keep you up to date with the progress we have made, what we will be working on in the coming months, community events you can get involved with and how to get in touch.

### Construction Update

We have now completed the main structural slab infills up to level 8 on all elevations and have 4 slab pours remaining on level 9 to complete the reinforced concrete frame. We are targeting completion of this by the end of February. Following this there is a smaller steel framed structure forming level 10 to complete which we are targeting for mid-March.

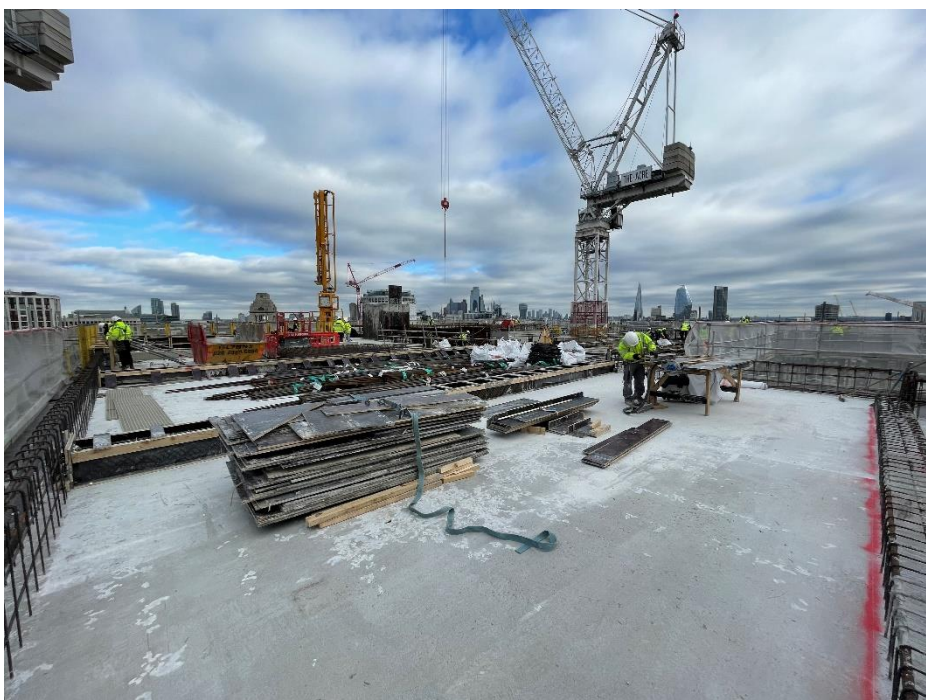
Installation of replacement windows continues on the Shelton St and Endell St elevations with new main façade elements commencing in the first week of March, starting on the Arne St elevation.

Mechanical and electrical installations near completion to the existing, retained parts of the building over levels 1 to 4. Installation has now commenced across these levels to the newly constructed slabs.

Block work has been completed to basement 2 level and is 75% complete to basement 1. Mechanical and electrical installations have commenced in basement 2 and main plant deliveries are scheduled for early March.

### Logistics:

The revised traffic management plan to mitigate road closures by utilities providers on Shelton Street and Endell Street has proved robust. We continue to liaise with Westminster CC and Camden CC during these and future planned closures to maintain efficient traffic management and will ensure marshalling of vehicles to protect other road users and pedestrians.



# THE ACRE



## NEWSLETTER

FEBRUARY 2023

### Community Engagement Update

The next drop-in surgeries will take place on:

**Monday 27<sup>th</sup> February 10-11am and 5.30-6.30pm** These are open to all neighbours and act as an opportunity to discuss any individual queries relating to the works with senior members of the project team.

If you would like to attend one of the virtual drop-in surgeries, please get in touch at:

**90LongAcre@kandaconsulting.co.uk** or **Charlene.Sargeant@lendlease.com** to book a slot with the project team within the times provided above and we will provide you with a secure link to meet members of the team.

### Working Hours

General working hours during this time will be:

**Monday – Friday:**

**8am – 6pm**

**Saturday:**

**8am – 1pm**



### Contact Us

If you have any concerns or questions, the staff listed below will be available to help, including the 24-hour on-site security team in case of any urgent issues:

Dave Shutt	Construction Director	07834 250 287	David.Shutt@lendlease.com
James Bebb	Senior Project Manager	07704 146 956	James.Bebb@lendlease.com
Charlene Sargeant	Social Value Manager	07918 740 880	Charlene.Sargeant@lendlease.com

Please contact the project consulting team to find out more about the activities taking place on site and for key construction updates at:

**90LongAcre@kandaconsulting.co.uk**