

# THE ACRE



## NEWSLETTER

DECEMBER 2022

Dear Neighbours,

Welcome to the monthly update on The Acre development from Lendlease. This regular newsletter will keep you up to date with the progress we have made, what we will be working on in the coming months, community events you can get involved with and how to get in touch.

### Construction Update

The following trade contractors will be joining the 90 Long Acre development within the next month:  
Essex Services Group: ESG will be the Mechanical, Electrical and Public Health Contractor responsible for the complete MEPH package for the development.

EA-RS: they will be carrying out all fire alarm and sprinkler systems for the building.

Lesterose: they will be completing the brickwork and blockwork on the project.

As more trade contractors start on site, we will see an increase in operatives joining our team. As always, they will be briefed on our site restrictions concerning noise and being mindful of nearby residents.

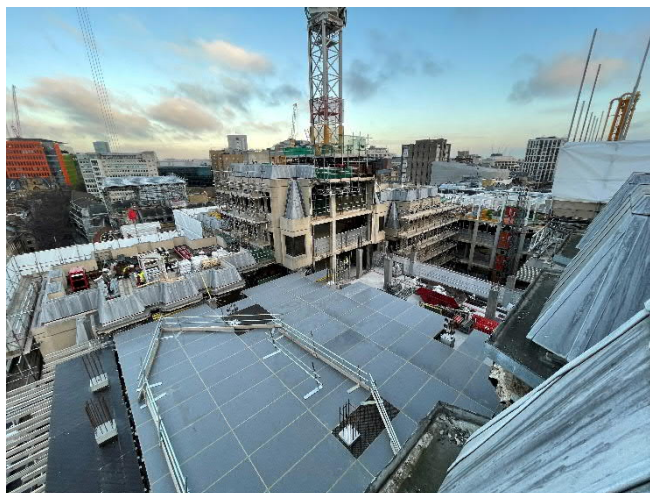
Works in the period continue to focus on progression of the concrete framing including the removal of the "big yellow props". We have completed Level 2 slab on the Endell St elevation and Level 3 slab on the Long Acre elevation. In the coming month we are planning to progress the frame through L5, 6 & 7

We have also continued with window replacement works along Arne St elevations. These works will also commence in line with the external scaffold erection along Endell St.

Internal fit out works will commence this month with ductwork, fan coil units, sprinkler pipe work, heating and cooling pipe work being installed across levels 1 -4.

Blockwork to basement 1 & 2 have commenced.

Deliveries to site continue to be managed in line with our traffic management plan and monitored by our logistics contractor. Deliveries will continue to arrive to our pit lanes on Endell Street and loading bay on Shelton Street.



# THE ACRE



## NEWSLETTER

DECEMBER 2022

### Community Engagement Update

The next drop-in surgeries will take place on:

**Tuesday 13<sup>th</sup> December between 10-11am and 5.30-6.30pm** These are open to all neighbours and act as an opportunity to discuss any individual queries relating to the works with senior members of the project team.

If you would like to attend one of the virtual drop-in surgeries, please get in touch at:

**90LongAcre@kandaconsulting.co.uk or Charlene.Sargeant@lendlease.com** to book a slot with the project team within the times provided above and we will provide you with a secure link to meet members of the team.

#### Odhams Walk

Lendlease and Wilson James have put up Christmas decorations for Odhams Walk residents.

We will also be attending their next Residents Meeting on 12<sup>th</sup> December to discuss the project and any feedback/comments the residents have.

### Working Hours

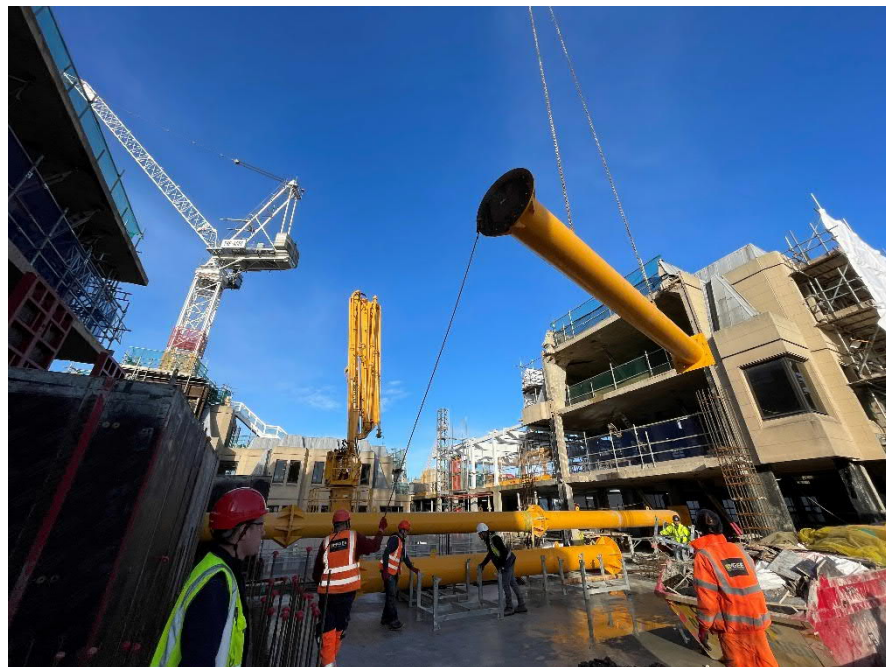
General working hours during this time will be:

Monday – Friday:

8am – 6pm

Saturday:

8am – 1pm



### Contact Us

If you have any concerns or questions, the staff listed below will be available to help, including the 24-hour on-site security team in case of any urgent issues:

Dave Shutt	Construction Director	07834 250 287	David.Shutt@lendlease.com
James Bebb	Senior Project Manager	07704 146 956	James.Bebb@lendlease.com
Charlene Sargeant	Social Value Manager	07918 740 880	Charlene.Sargeant@lendlease.com

Please contact the project consulting team to find out more about the activities taking place on site and for key construction updates at:

90LongAcre@kandaconsulting.co.uk