

THE ACRE



NEWSLETTER

OCTOBER 2022

Dear Neighbours,

Welcome to the monthly update on The Acre development from Lendlease. This regular newsletter will keep you up to date with the progress we have made, what we will be working on in the coming months, community events you can get involved with and how to get in touch.

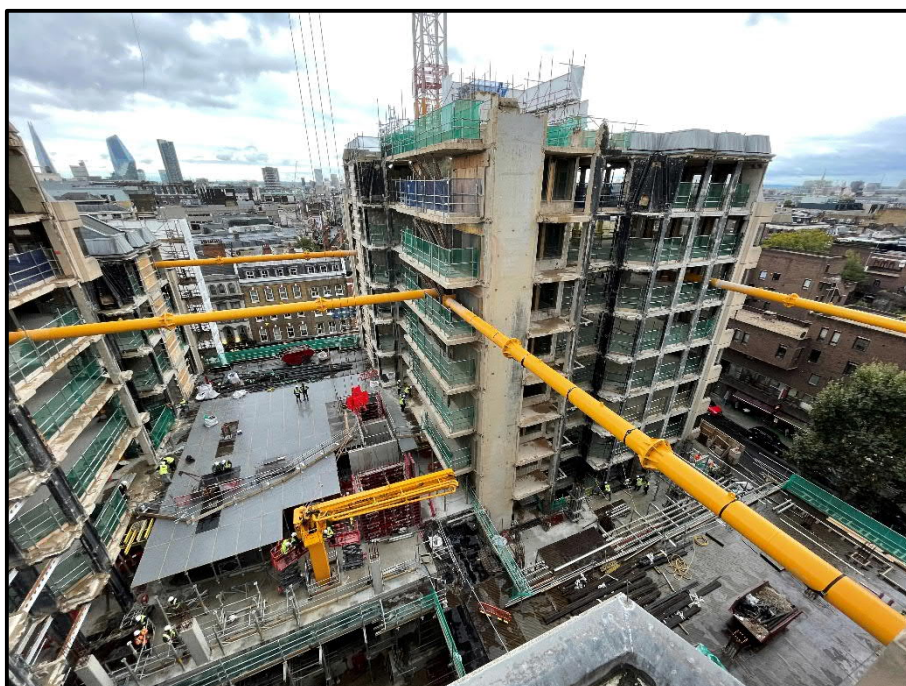
Construction Update

Works have continued to focus on construction of new above ground reinforced concrete structures. We have completed the level 2 slab on the Long Acre elevation with level 1 slab on the Endell Street elevation due to be poured imminently.

We have commenced window replacement works along the Arne Street elevations and will move on to the Shelton Street elevations once external scaffolds are complete and enclosing the facades.

We will also be installing a construction hoist in the Shelton Street loading bay to facilitate material movement to the basements.

Works over the next month will include continuation of slab pours, window replacement works, commencement of blockwork to basement levels and commencement of mechanical installations to existing floor space.



THE ACRE



NEWSLETTER

OCTOBER 2022

Community Engagement Update

The next drop-in surgeries will take place on:

Tuesday 25th October between 10-11am and 5.30-6.30pm These are open to all neighbours and act as an opportunity to discuss any individual queries relating to the works with senior members of the project team.

If you would like to attend one of the virtual drop-in surgeries, please get in touch at:

90LongAcre@kandaconsulting.co.uk or Charlene.Sargeant@lendlease.com to book a slot with the project team within the times provided above and we will provide you with a secure link to meet members of the team.

Working Hours

General working hours during this time will be:

Monday – Friday: 8am – 6pm

Saturday: 8am – 1pm

Contact Us

If you have any concerns or questions, the staff listed below will be available to help, including the 24-hour on-site security team in case of any urgent issues:

Dave Shutt	Construction Director	07834 250 287	David.Shutt@lendlease.com
James Bebb	Senior Project Manager	07704 146 956	James.Bebb@lendlease.com
Charlene Sargeant	Social Value Manager	07918 740 880	Charlene.Sargeant@lendlease.com

Please contact the project consulting team to find out more about the activities taking place on site and for key construction updates at:

90LongAcre@kandaconsulting.co.uk

