

THE ACRE



NEWSLETTER

SEPTEMBER 2022

Dear Neighbours,

Welcome to the monthly update on The Acre development from Lendlease. This regular newsletter will keep you up to date with the progress we have made, what we will be working on in the coming months, community events you can get involved with and how to get in touch.

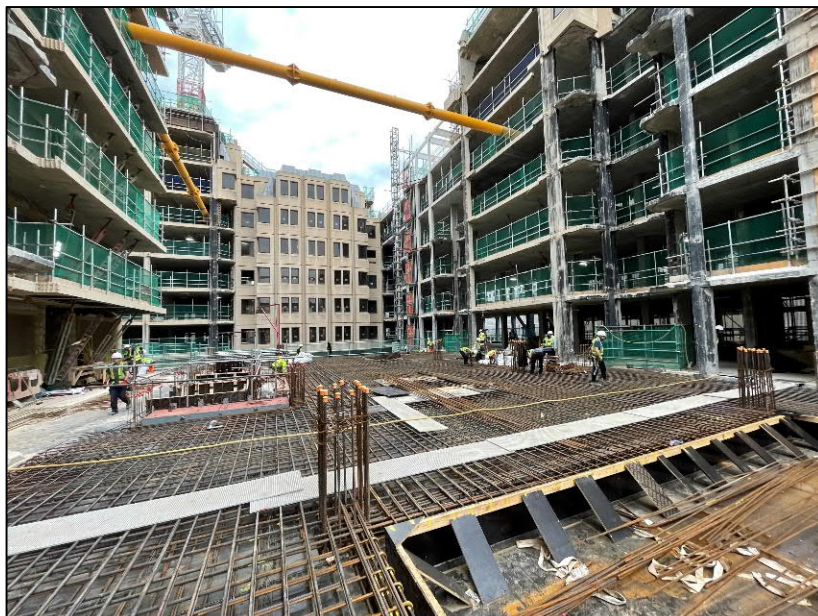
Construction Update

Since taking occupation of the site, works have focused on formation of new above ground reinforced concrete structures that will form the new building frame and link the existing buildings together.

We have implemented our traffic management plan that has been endorsed by Westminster City Council to ensure that disruption caused by construction vehicle movements is minimised.

We have installed the first construction hoist within the centre of the building to facilitate material and personnel distribution which will allow us to commence the next element of works relating to existing window replacement. These works will commence end the end of the month and will be contained by the external scaffolds that have already been erected in the month.

Works in the next period will continue to focus on progressing new the concrete frame at level 1 and above with one floor plate pour planned every week. Works will also include window replacement and existing façade cleaning.



THE ACRE



NEWSLETTER

SEPTEMBER 2022

Community Engagement Update

The next drop-in surgeries will take place on:

Tuesday 27th September between 10-11am and 5.30-6.30pm These are open to all neighbours and act as an opportunity to discuss any individual queries relating to the works with senior members of the project team.

If you would like to attend one of the virtual drop-in surgeries, please get in touch at:

90LongAcre@kandaconsulting.co.uk or Charlene.Sargeant@lendlease.com to book a slot with the project team within the times provided above and we will provide you with a secure link to meet members of the team.

Working Hours

General working hours during this time will be:

Monday – Friday: 8am – 6pm

Saturday: 8am – 1pm

Contact Us

If you have any concerns or questions, the staff listed below will be available to help, including the 24-hour on-site security team in case of any urgent issues:

Dave Shutt	Construction Director	07834 250 287	David.Shutt@lendlease.com
James Bebb	Senior Project Manager	07704 146 956	James.Bebb@lendlease.com
Charlene Sargeant	Social Value Manager	07918 740 880	Charlene.Sargeant@lendlease.com

Please contact the project consulting team to find out more about the activities taking place on site and for key construction updates at:

90LongAcre@kandaconsulting.co.uk

